



**THE BEST FOR THE COW, THE MILK AND THE MILKER**

# SAC BALANCE ARM – OPTIMIZE YOUR MILKING THROUGH AN OPTIMAL POSITIONING OF THE MILKING CLUSTER

The SAC Balance Arm will support the milk and pulsator hoses during milking ensuring the best positioning of the cluster under the cow.

The Balance Arm will move with the cluster; while attaching and during milking. Counter weights push the milk hose up to a point where it is not hitting the pit edge. At the same time, the arm pushes the hose forward and the cluster hangs squarely under the cow. When the cow moves, the milk hose moves along – and the Balance Arm will reposition the cluster. With this simple solution you will experience a better milking and absolutely no interference with your work – and the cow will only benefit from the better comfort during milking as the already light SAC milking cluster will seem even lighter.



**FOR THE COW:**

- The SAC Balance Arm ensures an optimal positioning of the milking cluster making sure that the force on each teat is the same
- The milking cluster is perfectly balanced under the cow, where a movable block keeps the milk hose in position – and the milk hose is guided through the Balance Arm
- Cows are milked fast, square and properly milked out
- Minimal load on the tits ensuring the best comfort for the cow.

**FOR THE MILKER:**

- Simple and mechanical design supporting a good, safe and ergonomic work environment
- The Balance Arm is constructed in stainless steel making it a very robust solution with no wear parts keeping costs at a minimum. No expensive electronic parts
- Easy adjustable arm easing the work conditions
- Flexible arm that moves with the cow and does not interfere with your work during milking
- The Balance Arm is mounted in a flexible bracket allowing it to move forward and sideways
- Support the cluster with 500 gram of weight.

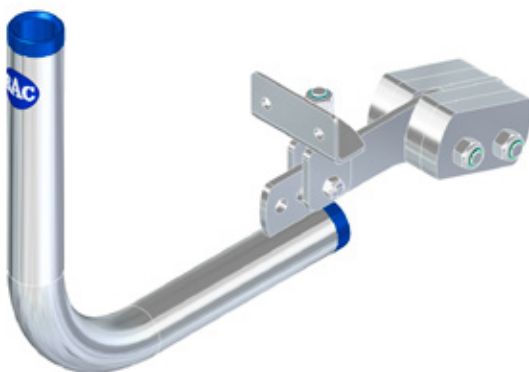


**SCAN THE CODE AND SEE MORE**



# TECHNICAL SPECIFICATIONS

- The pipe is  $\varnothing 38$  mm and the milk hose will be directed through the pipe
- The pipe is having a length and width of approx. 310 and 290 mm leading the milk hose in under the pit edge
- Moves freely up, down and to both sides
- Fits in SAC side-by-side parlours having a pit edge with minimum 15 centimeters room from the edge to the back wall
- Length can be adjusted manually when installing
- A stainless steel bolt through the plate of the pit edge ensures that the arm can move 45 degrees left and right.



*Technical drawing of the SAC Balance Arm.*